



Te Manawa

MUSEUM GALLERY SCIENCE CENTRE

WHAT'S ON



AUTUMN 2010

# EXHIBITIONS

## SOCIAL HISTORY



1

### **War in Paradise** **The Unofficial Story of New Zealand** **Soldiers in New Caledonia** <sup>1</sup> **13 February to 9 May**

During World War Two, the Third New Zealand Division was stationed in Bourail, on the west coast of New Caledonia. Although there was no fighting in New Caledonia, it was used as a training ground and base of operations for other parts of the Pacific. Situated in Bourail, the New Zealand War Cemetery and Memorial is an important legacy of New Zealand's wartime presence in the Pacific.

In this exhibition, photographer Paul Thompson's moving contemporary images of New Caledonia, the NZ War Cemetery and Memorial are displayed alongside historic images, maps and text drawn from the unofficial history of the Third Division. **FREE** **EDUC**

A Museum of Wellington touring exhibition.



---

Cover Image: Photographer: JL Kendrick. Image courtesy of Department of Conservation. 1: Archives New Zealand 1/20-139. 2: Mahmood Bhikoo. 3: "Gastronomically, cabbage leave, spud peelings and turnip tops could be termed 'high octane'..." Te Manawa Museums Trust collection 86/167/32. 4: Top Secondary Art from the Manawatū installed at Te Manawa in 2009. 5: Clare Plug, Dry Valley Sampling, 2009, photographer David Frost. Courtesy of Hawke's Bay Museum and Art Gallery, Napier. 6: Ann Verdcourt, Homage to Picasso, c.1984. Collection of Te Manawa Art Society, Inc. 7: Karl Maughan, Cross Hills, 2004. Collection of Te Manawa Museums Trust.. 8: Photographer: JL Kendrick. Image courtesy of Department of Conservation. 9: Sports Alive Exhibition in action. 10: Sports Alive Exhibition in action.

## The Crescent Moon: The Asian Face of Islam in New Zealand

20 February to 2 May

Renowned photographer Ans Westra and writer Adrienne Jansen travelled New Zealand recording the experiences of Muslims in their everyday lives, meeting an ethnically, culturally and theologically diverse group of people. The portraits and stories deal with daily life for New Zealand Muslims and reveal an emergent indigenous Islam in the Asia-Pacific region. **FREE**

### EXHIBITION LOCATION

#### City Library

Exhibition developed by Asia New Zealand in partnership with Pataka Museum of Arts & Cultures. Toured by Exhibition Services.



#### Inky's Cartoons

20 March - 30 May

The cartoons of Jim McNicol, aka 'Inky', were a regular feature on page 2 of Palmerston North's Tribune newspaper throughout the 1970s. At times both humorous and mildly irreverent, Inky liked his readers to be informed about local issues, and sought to capture popular opinion on public transport, airport expansion, student housing, the building of a second bridge across the Manawatū River and more.

Inky's cartoons are a light hearted record of happenings in Palmerston North during a crucial period in the city's growth. **FREE**



## ART



4

### CLARE PLUG LOOK SOUTH

**Until 5 April**

Textile artist Clare Plug visited Antarctica in 2006 on the Artists to Antarctica programme. This exhibition presents her response to this icy continent in a series of evocative quilts and banners. Clare has described Antarctica as “a time capsule, an ark and an early warning station”, themes which find resonance amid the typically dark, sombre and poetic handling of surface and texture in her works.

**FREE EDUC**

Exhibition toured by Hawke's Bay Museum and Art Gallery, and supported by Antarctica New Zealand, Creative New Zealand and the Mary Vigor Brown Trust.



**Until 14 March**

Ever wondered what it's like at the top? This is your opportunity to glimpse an installation of visual art portfolios, showcasing the highest achieving NCEA Level Three students from our region. **FREE**

Exhibition developed in collaboration with Manawātū Art Teachers' Association.



7



5

ceramics:  
**ANN VERDCOURT**  
a survey

**6 March - 13 June**

Ann Verdcourt is among New Zealand's most innovative and dedicated ceramic artists. Ann brings a keen interest and knowledge of art history and a strong sense of playfulness to her work, creating ceramic sculptures that breathe three dimensional life into imagery from the world of painting, and still life groupings that celebrate the aesthetic value of the ordinary.

**FREE EDUC**



6

Exhibition developed in collaboration with the Sarjeant Gallery Te Whare o Rehua, Whanganui.



**From 22 May**

On a cold and dreary day Thomas is stuck inside, day dreaming about the fun and adventures he could be having outside in the garden. Come along to this child-friendly art exhibition and let your imagination take flight. **FREE KIDS**

## SCIENCE

**Manawatū Wildlife  
Photographer of the Year 2010**

**COMPETITION**

**21 December 2009 - 2 July 2010**

**EXHIBITION**

**10 July - 10 October 2010**

Are you a local amateur photographer passionate about wildlife and our environment? Fill out an entry form and submit your photograph by Friday 2 July 2010. An exhibition of the best photographs received will be held at Te Manawa from 10 July - 10 October 2010. Grand Prize \$1000.

**FREE**



8

# SCHOOL PROGRAMME HOLIDAY PROGRAMME



9



**17 April - 18 July**

Compete in sporting challenges; test your skills; and learn about nutrition, speed, stamina, muscles, and balance. sports alive! makes discovering the science and technology behind sport fun, interesting, entertaining, and a little exhausting! Interactive exhibits show you the science behind a range of popular sports including rugby, netball, cricket, basketball, golf, rowing, cycling and football.

**FREE EDUC**

A Science Alive! Touring Exhibition



10

Our School Holiday programmes are very popular! We have a fun team of experts and helpers ready with activities and games for your child's growing and curious mind! Hours of entertainment for the Kids! Book in early to avoid disappointment.

|              |  |
|--------------|--|
| <b>Ages</b>  | 6 - 12 years   |
| <b>Cost</b>  | \$12 per session   |
| <b>Bring</b> | Your own drink, snacks and a bag to carry your things home in. |

**Tue 6**

### Clay Sculpture

*9am - Noon*

Using the ceramic artworks on display for inspiration, learn how to mould and work with clay to create your own clay pieces to take home.

### Fantastic Fashion

*1-4pm*

Design garments and accessories to your own fantastic taste, ending with a fashion show.

**Wed 7**

### Autumn Antics

*9am - Noon*

Try a range of activities based around autumn - kites, plants, animals and maybe some harvest treats.

### Marvellous Masks

*1-4pm*

Have fun creating a mask or 2 from a variety of different materials.

# HOLIDAY RAMME

6 APRIL - 16 APRIL

**Thur 8**

## **Creepy Crawly Critters**

*9am - Noon*

Design and make your ultimate creepy crawly critter using a variety of materials.

## **Tied in Knots**

*1 - 4pm*

Try some fun activities using rope, string and knotting.

**Fri 9**

## **Taonga Pūoro**

*9am - Noon*

Explore sounds of the Maori world and make your own instrument.

## **Chocolate As**

*1 - 4pm*

Make, design and decorate your own chocolates, complete in their own packaging.

Ideal for chocoholics.

**Mon 12**

## **Autumn Antics**

*9am - Noon*

Try a range of activities based around autumn - kites, plants, animals and maybe some harvest treats.

## **Taonga Puoro**

*1 - 4pm*

Explore sounds of the Maori world and make your own instrument.

**Tue 13**

## **Puppets and Drama**

*9am - Noon*

Create a magical puppet before engaging in some fun drama games and performance.

**Fantastic Fashion**

*1 - 4pm*

Design garments and accessories to your own fantastic taste, ending with a fashion show.

**Wed 14**

## **Marvellous Masks**

*9am - Noon*

Have fun creating a mask or 2 from a variety of different materials

**Creative Destruction**

*1 - 4pm*

What's inside a machine? Take one apart and find out.

**Thur 15**

## **Reconstructive Creation**

*9am - Noon*

Use parts of machines to make something new of your own design.

## **Creepy Crawly Critters**

*1 - 4pm*

Design and make your ultimate creepy crawly critter using a variety of materials.

**Fri 16**

## **Ngā Momo Tākaro (Games)**

*9am - Noon*

Have fun making and playing traditional Maori games.

## **Chocolate As**

*1 - 4pm*

Make, design and decorate your own chocolates, complete in their own packaging.

Ideal for chocoholics.

# TE MANAWA

## DEVELOPMENTS 2010



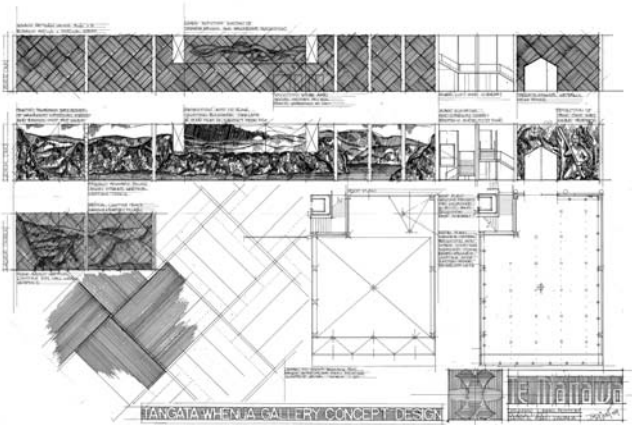
1

### TE MANAWA IS CHANGING

Plans are now well underway for the changes to the Tangata Whenua Gallery as part of our exciting redevelopment. A design has been prepared for the gallery which is shown below. A key

feature of the new gallery will be a constellation ceiling highlighting Māori astronomy and star lore. This gallery will open in mid 2011.

Throughout the gallery development process Te Manawa will remain open, with plenty for visitors to see and do.



2

1 Artist impression of Te Manawa and Rugby Museum Developments.

2 Artist impression of new Tangata Whenua Gallery.

# EVENTS

## MARCH

### Thur 4

**Science Café: Smart and speedy, sweet and juicy crunches - how apple genomics will bring better fruit to market twice as fast.**

6.30pm, Art Gallery

Speaker: Sue Gardiner, Plant & Food Research. **FREE** **TALK**

### Sat 13 & 20

#### Lantern Making

2 - 4pm, Art Gallery

Create your own lantern for the exciting new lantern parade on 26 March, as part of the Festival of Cultures 2010. All materials provided.

**FREE** **BOOK**

### Thur 18

#### Arts and Society Film Screening

##### The Man in the Hat

6 - 7.30pm

A screening of "The Man in the Hat". Luit Beiringa films the story of Peter McLeavey, art dealer extraordinaire, and his lifelong friendships with famous New Zealand artists. **FREE**

### Sun 21

#### Sunday Concert Series

2.30pm, Art Gallery

Roy Tankersley and Coralie Hunter, Harmonium and Piano. Entry by Koha/Donation.

### Thur 25

#### Pecha Kucha

6.30 - 8.30pm, Art Gallery

Can you share your ideas in only 6 minutes 40 seconds? You will see and hear from a range of presenters sharing their unique ideas. Everyone is welcome and if you wish to present on the night contact Te Manawa for more information. **FREE**

Pecha Kucha is devised and shared by Klein Dytham Architecture.

### Fri 26

#### Te Manawa Tots

10am, Art Gallery

Explore Te Manawa's latest exhibitions with guided tours for parents with babies and young children. Enjoy morning tea afterwards. Buggies welcome. Parenting facilities available.

**FREE** **BOOK**

### Sun 28

#### Sunday Concert Series

2.30pm, Art Gallery

Joanna Hodgkinson, Solo Piano. Entry by Koha/Donation.

### Wed 31

#### U3A Lecture Series: The Civil Society - Exploring Ways Forward

2 - 4pm, Art Gallery

\$5 (includes tea/coffee).

Introduction: Back to the Future.

**CA** **TALK**

## EVENT KEY

**CA** Charges Apply

**TALK** Exhibitor/Artist talk

**FREE** No charge - it's on us

**LNCH** Lunchtime Performances

**SOON** Coming Soon

**KIDS** Designed for kids to enjoy

**WKSP** Workshop

**EDUC** Education Programme Available

**COM** Community Event

**BOOK** Booking is required for this event

## APRIL

**Thur 1**

**Science Café:**

**Impact Antarctica: Soils, Human Impacts and Amazing Landscapes**

6.30pm, Art Gallery

Speaker: Tanya O'Neill, second-year PhD student, Landcare Research Ltd.

**FREE TALK**

**Wed 7**

**U3A Lecture Series: The Civil Society - Exploring Ways Forward**

2 - 4pm, Art Gallery

\$5 (includes tea/coffee).

Education: A Profession in Crisis?

**CA TALK**

**Sun 11**

**Ann Verdcourt Artist talk**

2pm, Art Gallery

Join the artist for a conversation about her work, methods and inspirations - questions welcome. **FREE TALK**

**Wed 14**

**U3A Lecture Series: The Civil Society - Exploring Ways Forward**

2 - 4pm, Art Gallery

\$5 (includes tea/coffee).

The Media: The Power to Influence our Lives. **CA TALK**

**Sun 18**

**Sunday Concert Series**

2.30pm, Art Gallery

Ingrid Culliford and Kris Zuelicke, Flute and Piano. Entry by Koha/Donation.

**Wed 21**

**U3A Lecture Series: The Civil Society - Exploring Ways Forward**

2 - 4pm, Art Gallery

\$5 (includes tea/coffee).

Culture, Heritage and Beliefs.

**CA TALK**

**Thur 22**

**Lunchtime Performance**

12.30pm, Art Gallery

Joyce Anyon, Classical Piano. **FREE**

**Sat 24**

**ANZAC Weekend Floortalk: New Zealand and the First World War in (unpublished) Photographs**

2pm, Art Gallery

Speaker: Glyn Harper, Professor of War Studies, Centre for Defence Studies, Massey University. **FREE**

**Wed 28**

**U3A Lecture Series: The Civil Society - Exploring Ways Forward**

2 - 4pm, Art Gallery

\$5 (includes tea/coffee).

Health: A Haemorrhaging Patient.

**CA TALK**

**Thur 29**

**Lunchtime Performance**

12.30pm, Art Gallery

Great Shakes 2010: A Miscellany from Shakespeare. **FREE**

**Fri 30**

**Te Manawa Tots**

10am, Art Gallery **FREE BOOK**

**Fri 30**

**Twilight Art**

5 - 6.30pm, Art Gallery

Visit the Art Gallery after hours and enjoy the latest exhibitions along with drinks, nibbles and live music. **FREE**

## MAY

**Thur 6**

### Science Café:

#### What on Earth has the Massey Microbrewery got to do with Science?

6.30pm Art Gallery

Speaker: Professor Richard Archer, Head of Institute of Food, Nutrition and Human Health, Massey University.

FREE TALK

**Sat 8**

#### Crafts and Card Making for Mum

11am - 2pm

Kids, get creative and make a card and paper flowers for mum. FREE

**Sun 9**

#### Mother's Day Afternoon Tea

2pm

Mums, treat yourselves to a delicious afternoon tea in the Art Gallery. Enjoy beautiful live music and our current exhibitions on show. Tickets \$15. Limited numbers. Bookings required

CA BOOK

**Sat 15**

#### Cartoon Workshop

1 - 4pm

A fun introduction to drawing cartoons. Create a comic strip, your very own superhero and much more! Suitable for 8 - 14 years. Limited places.

CA BOOK

**Thur 20**

#### Arts and Society Talk

6 - 7.30pm

Speakers: Warren and Virginia Warbrick (sculptor and printmaker) New works from old worlds. FREE

**Sun 22**

#### Professional Practice: Caring for your Objects

Under the guidance of former Manawatū Art Gallery Director Margaret Taylor, participants will be introduced to professional standards of caring for and storing objects such as ceramics as practiced by museums. Visit our website for more details. WKSP CA BOOK

**Sun 23**

#### Sunday Concert Series

2.30pm

Sasha Routh and Friends entertain with the cello and piano. Entry by Koha/Donation.

**Thur 27**

#### Lunchtime Performance

12.30pm

Take Note Female Acapella Quartet.

FREE

**Thur 27**

#### Pecha Kucha

6.30 - 8.30pm

Can you share your ideas in only 6 minutes 40 seconds? Contact Te Manawa for more information. FREE

Pecha Kucha is devised and shared wby Klein Dytham Architecture.

**Fri 28**

#### Te Manawa Tots

10am, Art Gallery FREE BOOK

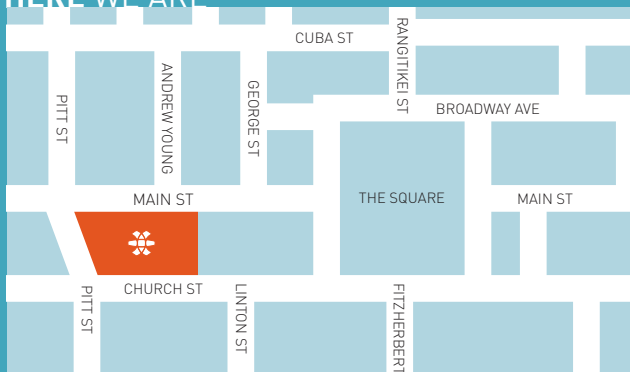
**Sun 30**

#### Sunday Performance

3.30pm

Enjoy a concert by Mainly Singing Song Group. FREE

## HERE WE ARE



### TE MANAWA AND YOU

Te Manawa are proud to be the only institution in New Zealand to unite a museum, art gallery and interactive science centre creating a unique experience.

### FREE ADMISSION

This year we are offering free entry to all exhibitions.

### OPENING HOURS

10am to 5pm daily including weekends and public holidays (except Christmas Day, Boxing Day, New Year's Day and Good Friday.)

### PARKING

A pay and display public carpark is located on Main Street.

### DISABILITY ACCESS

Te Manawa galleries are readily accessible with lifts servicing all levels.

### PUBLIC TRANSPORT

Main Street is served by bus and taxi.

### GUIDED TOURS

Tours are available for groups. Please call for details of tours available and booking details.

### BIRTHDAY PARTIES

We have many themes to choose from including: Dinosaur, Bubbles, Music and more. Bookings are essential.

### VENUE HIRE

Book your next conference, meeting, cocktail or dinner function. For availability and rates contact our events coordinator.



326 Main Street, Palmerston North  
Private Bag 11055 Palmerston North 4442

P 06 355 5000 or 0800 4 A MUSEUM

E enquiries@temanawa.co.nz W www.temanawa.co.nz